



Morecambe Offshore Windfarm: Generation Assets Environmental Statement

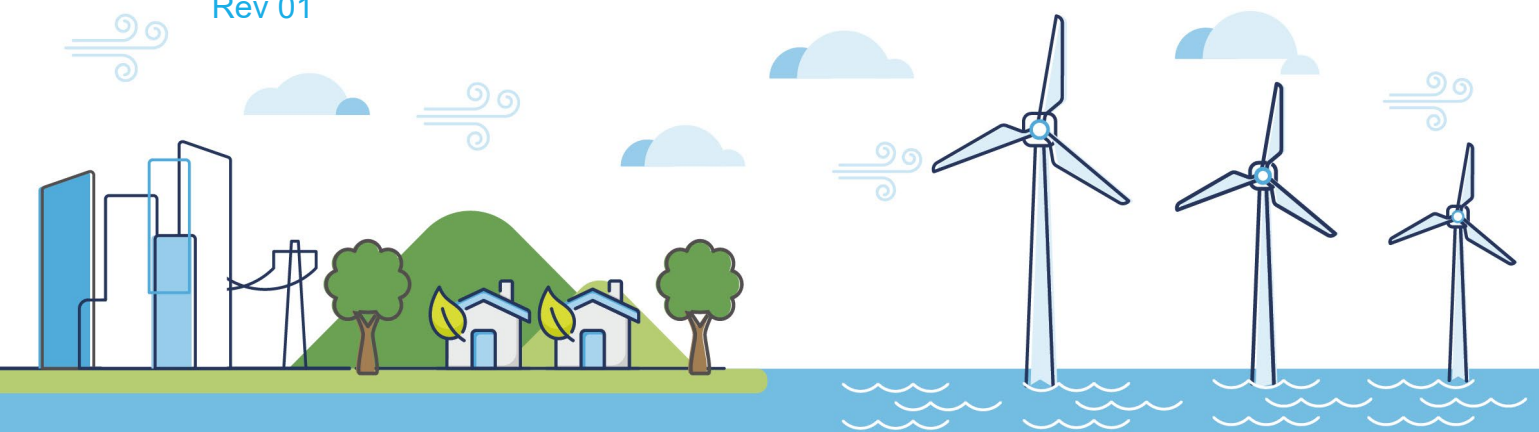
Volume 5

Chapter 18 SLVIA Figures (Part 6 of 34)

PINS Document Reference: 5.3.18.6

APFP Regulation: 5(2)(a)

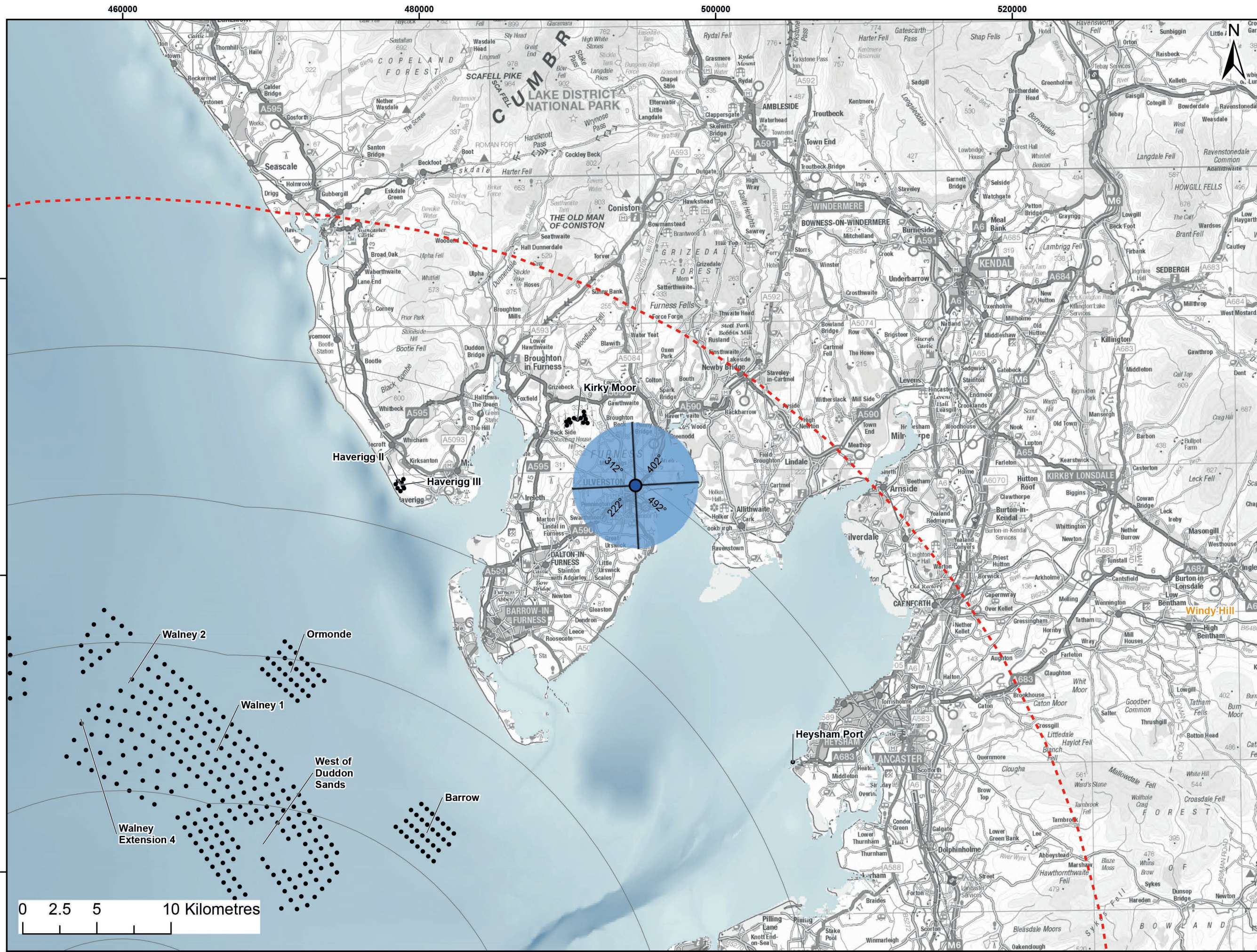
Rev 01



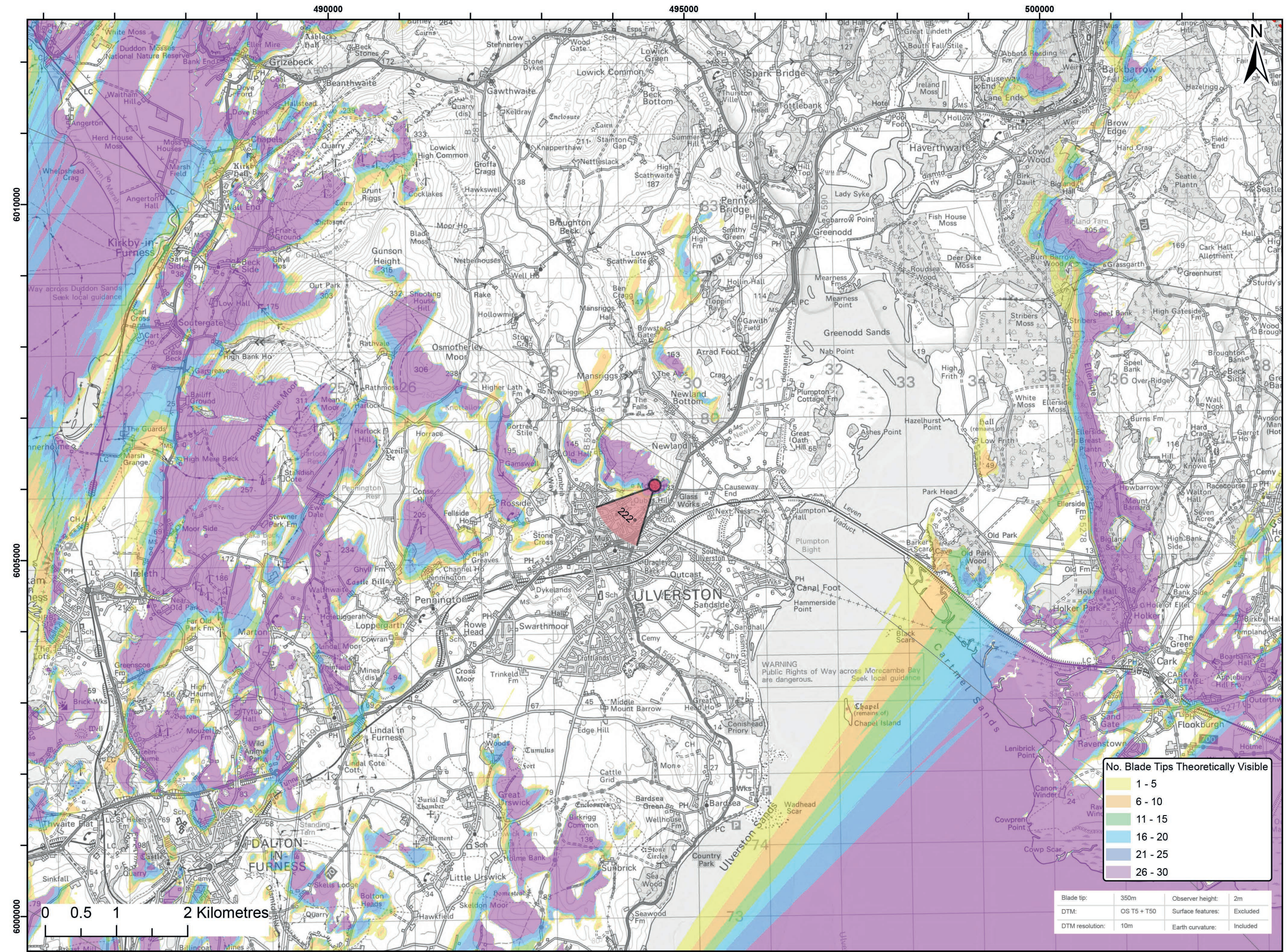
Document History

Doc No	MOR001-FLO-CON-ENV-FIG-1180	Rev	01
Alt Doc No	PC1165-RHD-ES-XX-DG-Z-0018		
Document Status	Approved for Use	Doc Date	May 2024
PINS Doc Ref	5.3.18.6	APFP Ref	5(2)(a)

Rev	Date	Doc Status	Originator	Reviewer	Approver	Modifications
01	May 2024	Approved for Use	Royal HaskoningDHV	Morecambe Offshore Windfarm Ltd	Morecambe Offshore Windfarm Ltd	n/a



Viewpoint Location Plan Baseline Panorama (90 Degree View)
Scale: 1:200,000



Viewpoint Location Plan (53.5 Degree View)
Scale: 1:50,000

Legend:

- Morecambe Offshore Wind Farm Status
- ▼ 90 Degree Field of View
- ▼ 53.5 Degree Field of View
- 10km Radii
- 60km Study Area
- Morecambe Offshore Windfarm Site

Cumulative Wind Farms Status

- Operational
- Under Construction
- Consented
- Application
- Scoping
- Pre-Application

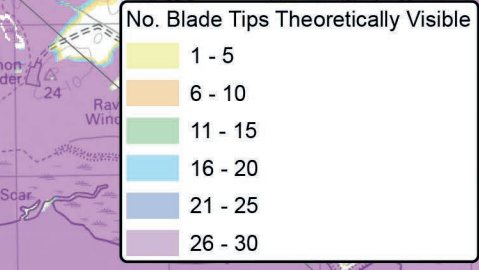
© Crown copyright and database rights (2023) Ordnance Survey 0100031673.

Report:
Morecambe Offshore Windfarm: Generation Assets Environmental Statement

Title:
Viewpoint 3: Ulverston (Hoad Monument)

Figure: 18.26a	Drawing No: 211609				
Revision: P02	Date: 25/09/2023	Drawn: RA	Checked: SM	Size: A3	Scale: 1:50,000

Co-ordinate system: WGS 1984 UTM Zone 30N

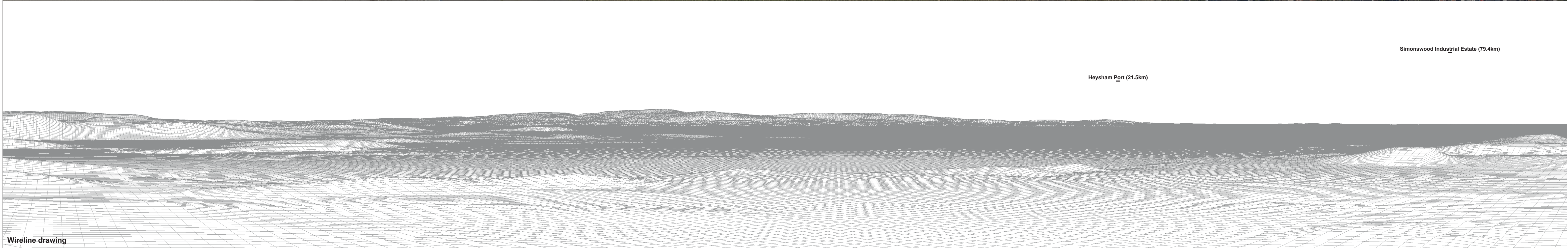


Blade tip: 350m	Observer height: 2m
DTM: OS TS + T50	Surface features: Excluded
DTM resolution: 10m	Earth curvature: Included



Baseline photograph

This image provides landscape and visual context only



Wireline drawing

Simonswood Industrial Estate (79.4km)

Heysham Port (21.5km)

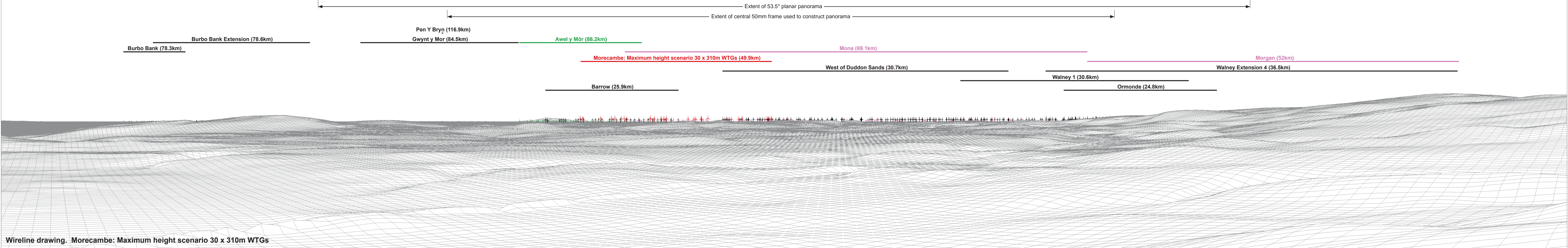
OS reference:	329457 E 479068 N	Horizontal field of view:	90° (cylindrical projection)	Camera:	Canon EOS 6D
Eye level:	132.02 m AOD	Principal distance	522 mm	Lens:	EF50mm f/1.4 USM
Direction of view:	132°			Camera height:	1.5 m AGL
Nearest turbine:	49.910 km			Date and time:	22/06/2022, 18:14

Figure: 18:26b
Viewpoint 3: Ulverston (Hoad Monument)



Baseline photograph

This image provides landscape and visual context only



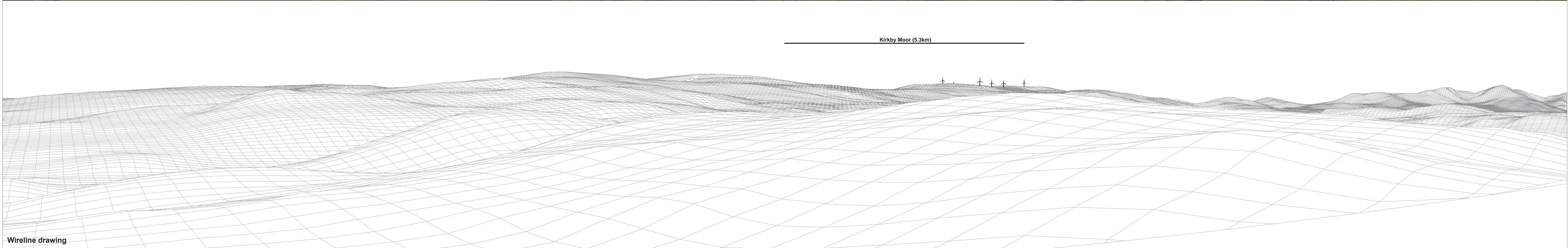
OS reference:	329457 E 479068 N	Horizontal field of view:	90° (cylindrical projection)	Camera:	Canon EOS 6D
Eye level:	132.02 m AOD	Principal distance:	522 mm	Lens:	EF50mm f/1.4 USM
Direction of view:	222°			Camera height:	1.5 m AGL
Nearest turbine:	49.910 km			Date and time:	22/06/2022, 18:14

Figure: 18:26c
Viewpoint 3: Ulverston (Hoad Monument)



Baseline photograph

This image provides landscape and visual context only



Wireline drawing

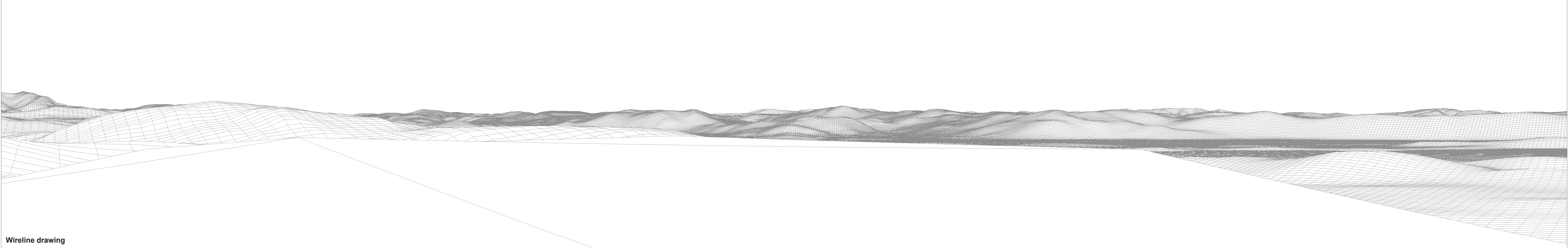
OS reference: 329457 E 479068 N	Horizontal field of view: 90° (cylindrical projection)	Camera: Canon EOS 6D
Eye level: 132.02 m AOD	Principal distance: 522 mm	Lens: EF50mm f/1.4 USM
Direction of view: 312°		Camera height: 1.5 m AGL
Nearest turbine: 49.910 km		Date and time: 22/06/2022, 18:14

Figure: 18:26d
Viewpoint 3: Ulverston (Hoad Monument)



Baseline photograph

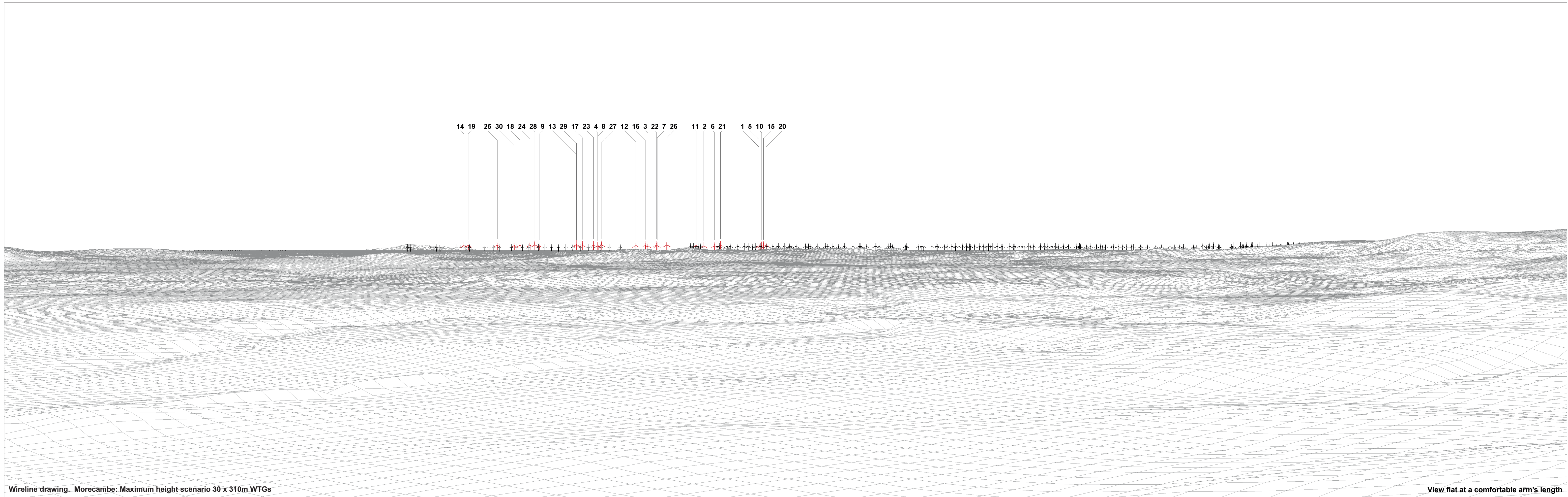
This image provides landscape and visual context only



Wireline drawing

OS reference: 329457 E 479068 N	Horizontal field of view: 90° (cylindrical projection)	Camera: Canon EOS 6D
Eye level: 132.02 m AOD	Principal distance: 522 mm	Lens: EF50mm f/1.4 USM
Direction of view: 42°		Camera height: 1.5 m AGL
Nearest turbine: 49.910 km		Date and time: 22/06/2022, 18:14

Figure: 18:26e
Viewpoint 3: Ulverston (Hoad Monument)



Wireline drawing. Morecambe: Maximum height scenario 30 x 310m WTGs

View flat at a comfortable arm's length

OS reference:	329457 E 479068 N	Horizontal field of view:	53.5° (planar projection)	Camera:	Canon EOS 6D
Eye level:	132.02 m AOD	Principal distance:	812.5 mm	Lens:	EF50mm f/1.4 USM
Direction of view:	222°	Paper size:	841 x 297 mm (half A1)	Camera height:	1.5 m AGL
Nearest turbine:	49.910 km	Correct printed image size:	820 x 260 mm	Date and time:	22/06/2022, 18:14

Figure: 18:26f
Viewpoint 3: Ulverston (Hoad Monument)



Baseline Photograph

View flat at a comfortable arm's length

OS reference: 329457 E 479068 N	Horizontal field of view: 53.5° (planar projection)	Camera: Canon EOS 6D	
Eye level: 132.02 m AOD	Principal distance: 812.5 mm	Lens: EF50mm f/1.4 USM	
Direction of view: 222°	Paper size: 841 x 297 mm (half A1)	Camera height: 1.5 m AGL	
Nearest turbine: 49.910 km	Correct printed image size: 820 x 260 mm	Date and time: 22/06/2022, 18:14	Figure: 18:26g Viewpoint 3: Ulverston (Hoad Monument)